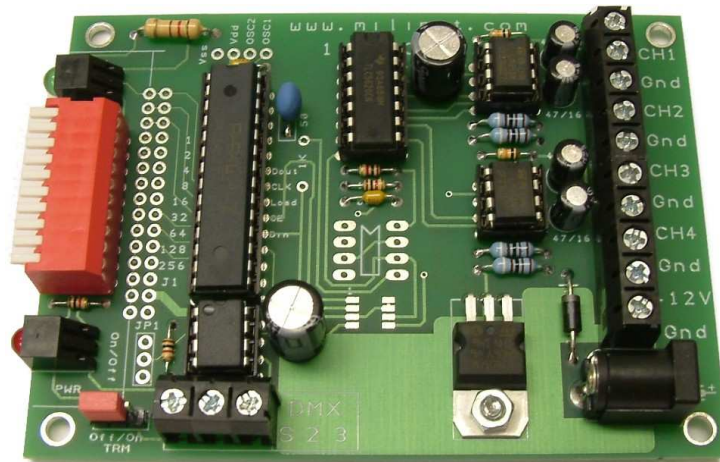


## DMX- Voltage Converter PRO



### Overview

A four channel DMX to Voltage (0-10V DC) converter with base address selectable between 1 and 509 for use on standard DMX512 networks

### Connections

DMX: 3 pin terminal block with 120 Ohm termination resistor.  
Power Supply: +12V DC @ 500ma via either 2-way terminal block or 2.1mm socket connector (centre +)  
Voltage Outputs: 0-10V DC @ up to 20mA per channel via 2-way screw terminals (outputs use LM358 op amps- see the manufacturer's data sheet for device power limitations)

### Base Address selection

Base address is set using the DIP switches 1 - 9. Add-up the printed values where the switch is set to ON to obtain the base address no switches set defaults to address 1.

### Output Mode

DIP Switch 10 J1 selects a standard linear output (switch in OFF position- default position) and a logarithmic output (switch in ON position) on all output channels.

### Indicators

RED LED Power supply ON

GREEN LED DMX Status: ON when valid DMX signal is being received. Flashes when no valid DMX signal is being received.

### PCB Size

97x72mm with 3.5mm mounting holes at 89 x 64mm.

---