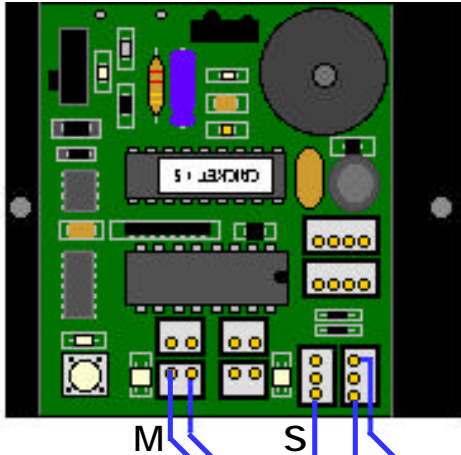


## Forward / Backward Automated System

### Handy Cricket Interface



In this sample project a Motor Gearbox will move along a track forward until it comes in contact with **Switch 1**. On contact with **Switch 1** a signal will be send to the Cricket Interface indicating that motor Gearbox has reached the outer edge limits of switch 1. The Interface will send a stop and then a reversing signal to the Motor which will now move the Motor and Gearbox along the track backwards until it come in contact with **Switch 2**.

On contact with **Switch 2** a signal will be send to the Cricket Interface indicating that motor Gearbox has reached the outer edge limits of switch 2.

The Interface will send a stop and then a reversing signal to the Motor which will now move the Motor and Gearbox along the track forward until it comes in contact with **Switch 1** again.

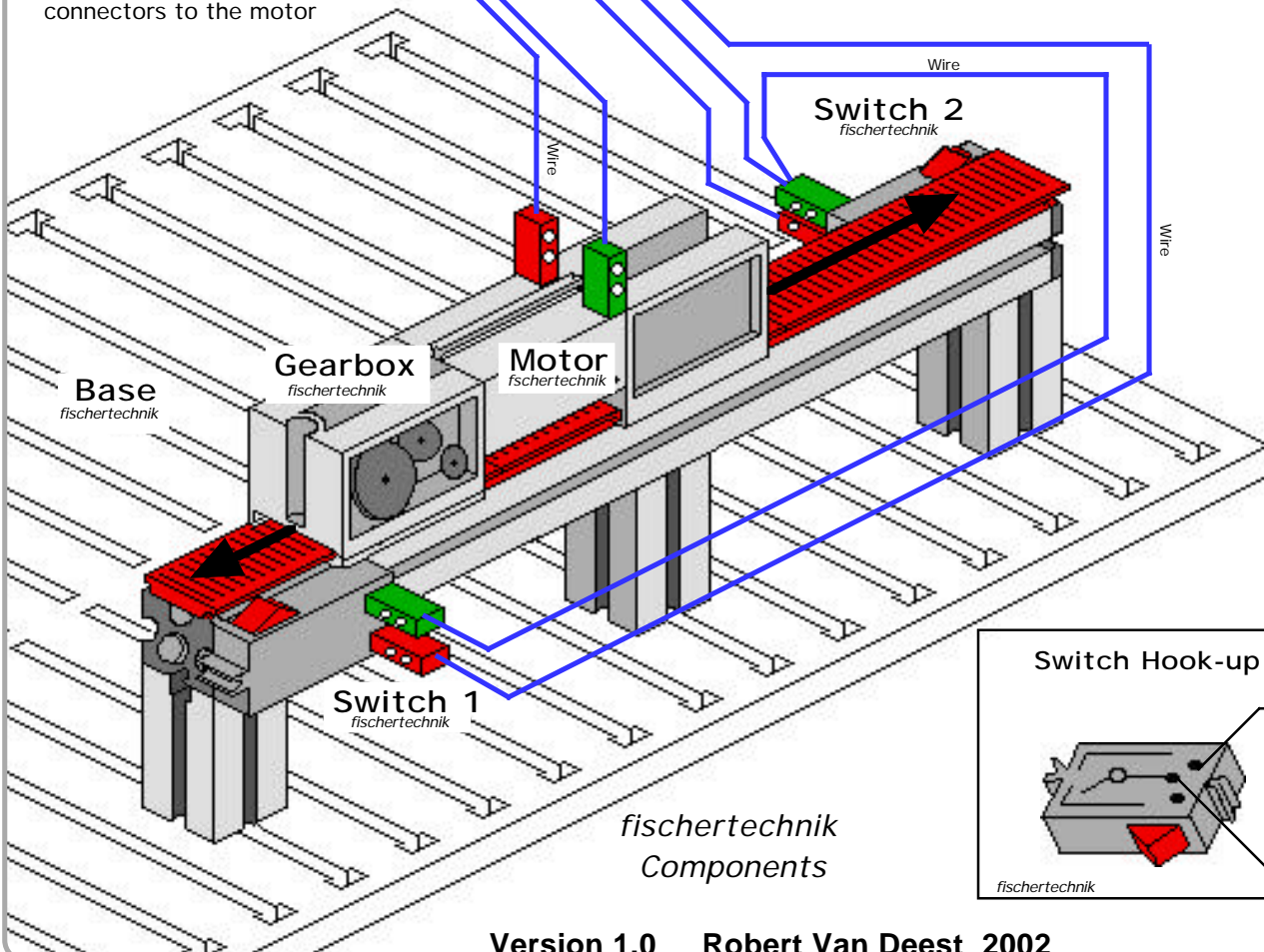
This cycle will continue over and over automatically, until stopped.

#### NOTE:

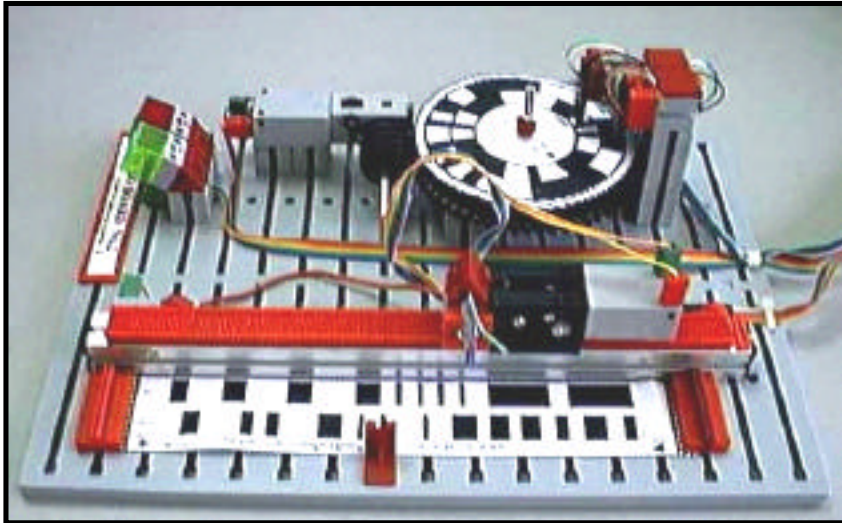
If Motor Gearbox moves toward switch 2 at start of routine, physically reverse the red and green wire connectors to the motor

This application could be used to move materials, object to a new location, then return back to the starting position automatically.

This application might even represent an elevator mounted vertically, moving material, or objects to different levels.

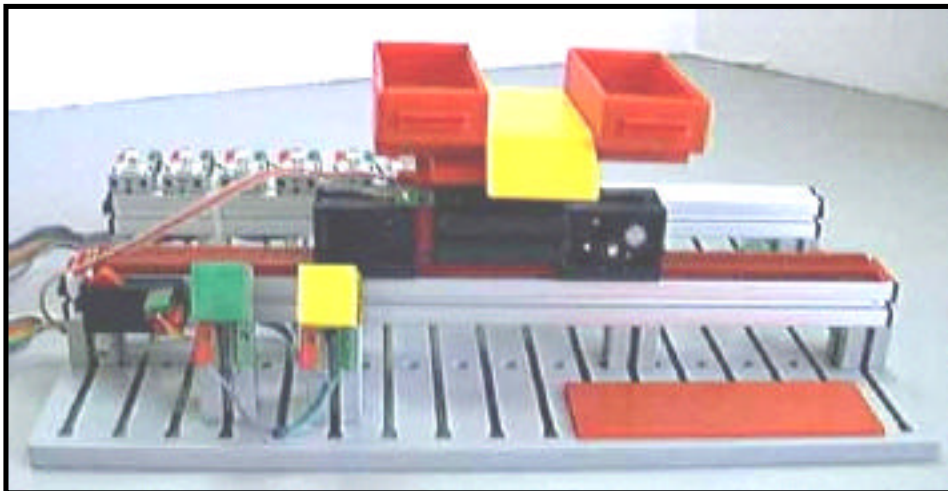


## Application Model Examples



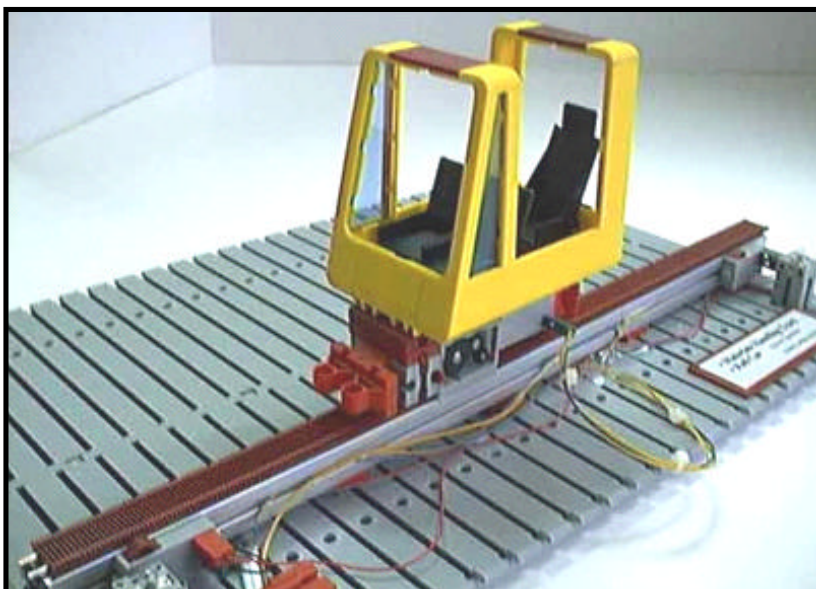
**Bar Code Reader  
Linear and Rotary**

Note:  
Sensor mounted to moving  
motor and set to read  
barcodes below track



**Materials  
Transporter**

Note:  
Lights green and yellow  
were used to indicate what  
direction the unit is  
traveling



**People Mover**

## Handy Cricket Interface Control Code

**Sample Code**

to automated

**Your Code**

## Handy Cricket Project fischertechnik – Components Needed

<b>Quantity</b>	<b>Part Description</b>
1	Base Plate
2	Mini Switch
1	Mini Motor
1 each	Mini Motor Rack with gears and Mini Motor Rack no gears
1	Aluminum Strut
3	Wire Flat Connectors (Red)
3	Wire Flat Connectors (Green)
1 Roll	Connection Wire
1	Mini-Screwdriver (Wire Connection Blocks)
3	Gray Blocks ( double ended)
2 -1/2	Rack and Pinion Track