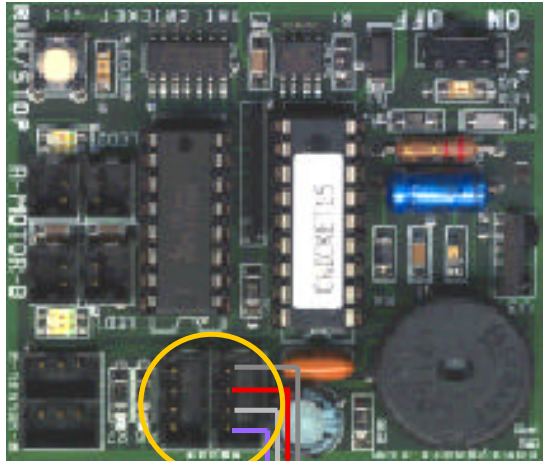


Handy Cricket Interface

Servo Motor Connection Quick Review

Cricket 8 -Servo Controller

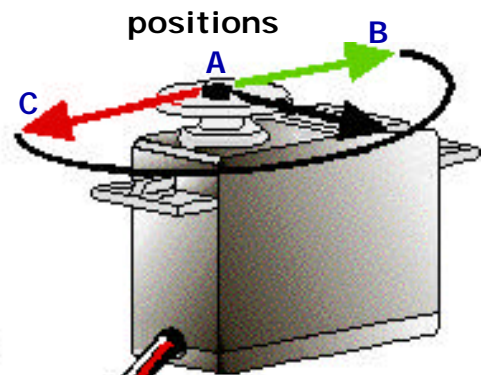
Handy Cricket Interface



Bus Ports

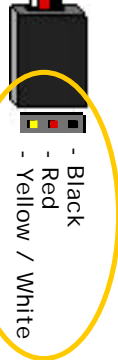
Purple
White
Red
Black

Standard R/C Servo
+5 Vdc



Channel 7

R/C Servo
Connection



- Black
- Red
- Yellow / White

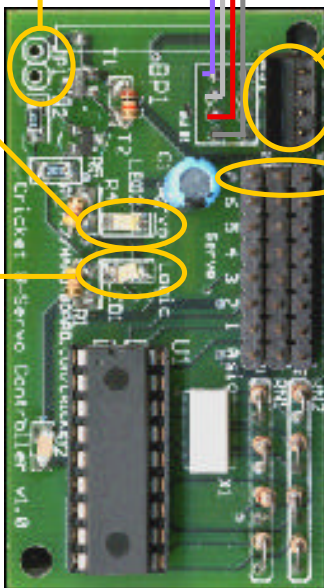
Power
Jumper
(JP1)

Bus Port

Power
LED
(Red)

Logic
LED
(Green)

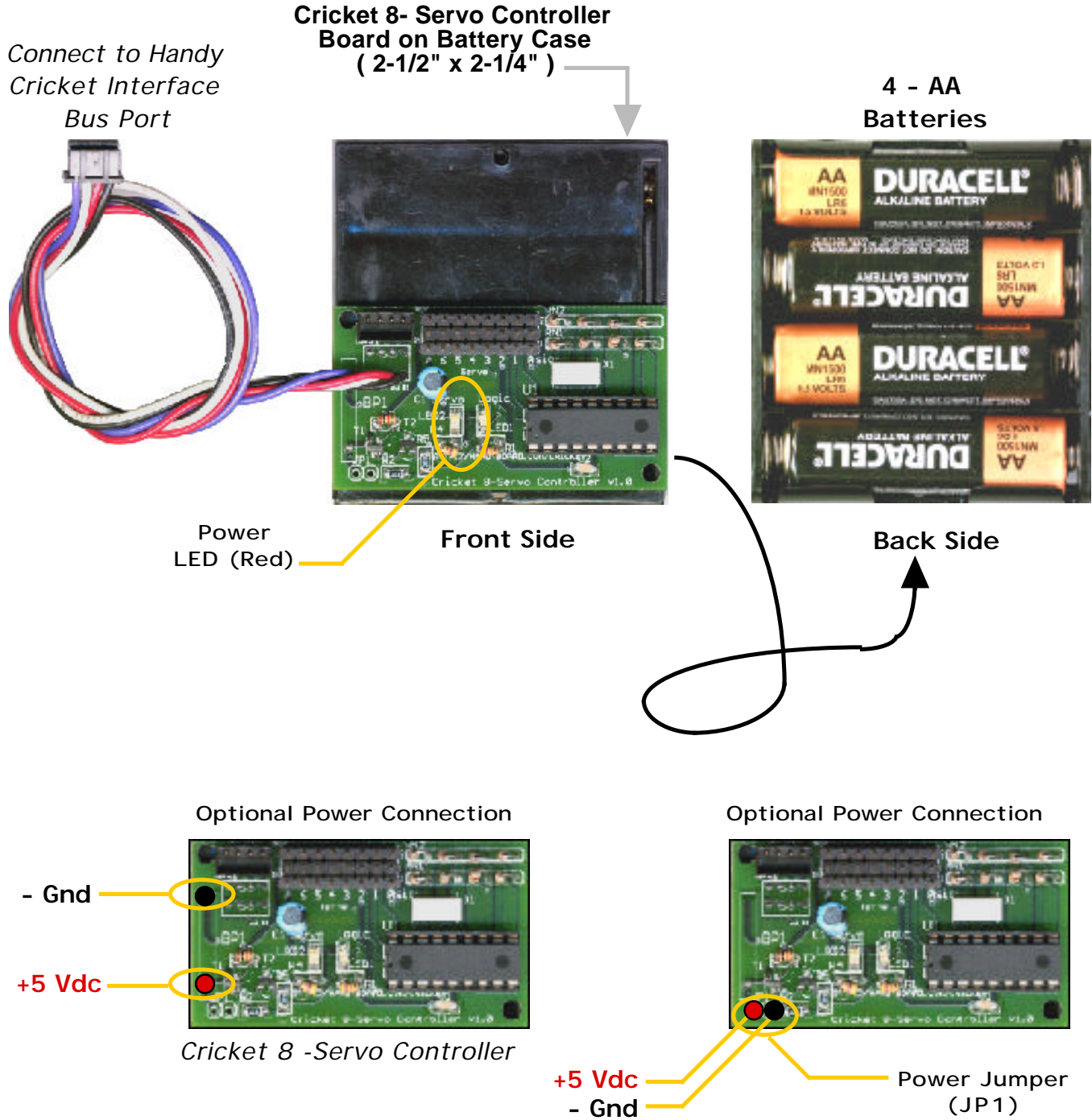
7
6
5
4
3
2
1
0
Servo
Channels



Cricket 8 -Servo Controller

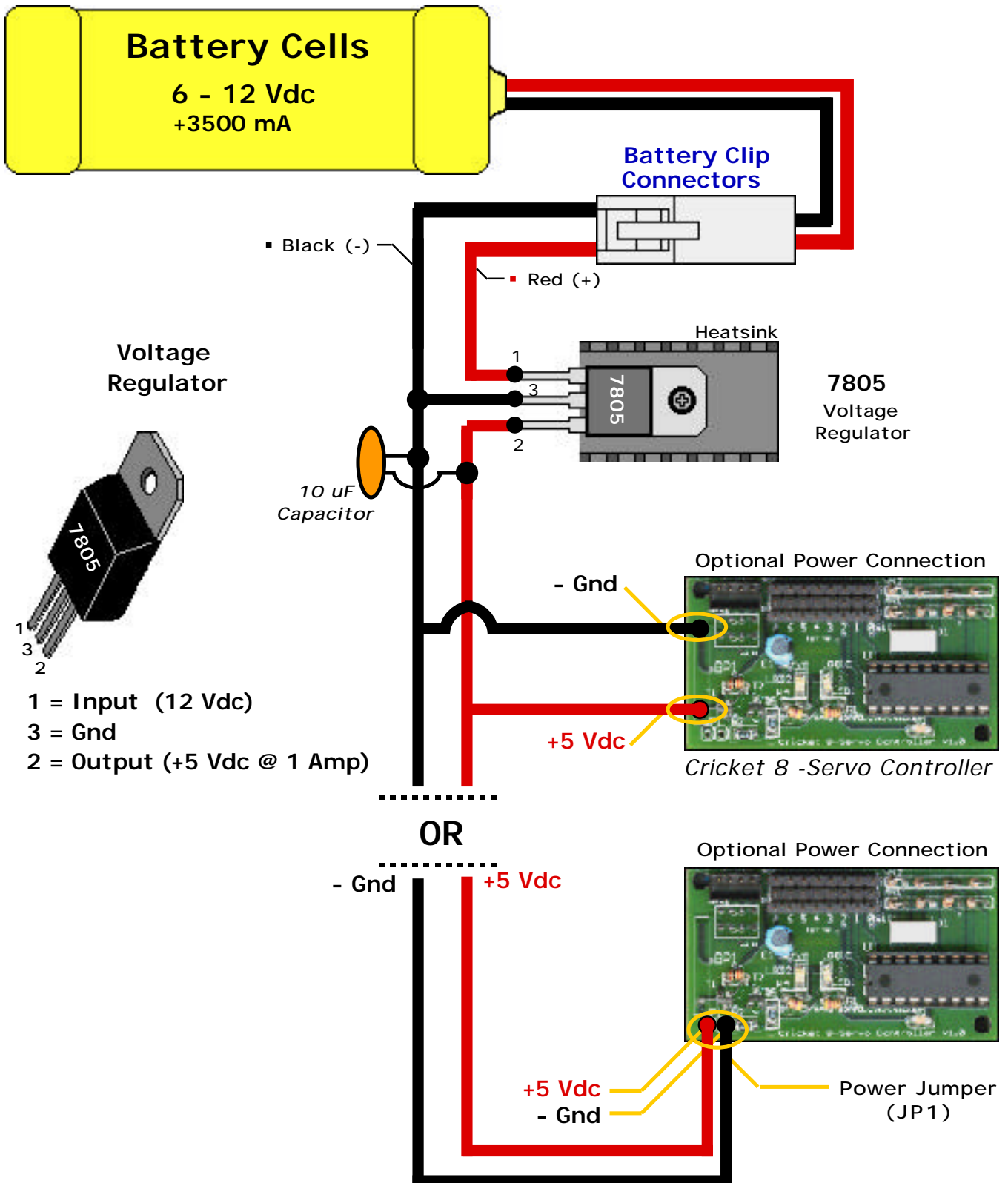
Handy Cricket Interface Servo Motor Power Connection

Cricket 8 -Servo Controller



Handy Cricket Interface Servo Motor Optional Power Connection

Cricket 8 -Servo Controller



Handy Cricket Interface

Cricket 8 - Servo Controller

```
global [x]

;***** Servo Controller Macros *****

; also turns on servo
; neutral is lost when servo is turned off
to servoon :id :neutral
  bsend $115
  bsend :id * 2
  bsend (:neutral % 64) + 128
end

to servooff :id
  bsend $115
  bsend :id * 2
  bsend 0
end

; this command should be used once at the
; beginning of a program to set up the servo
; this function will turn on servo, and the
; servo will return to normal mode if it is
; turned off
to servorev :id :neutral
  bsend $115
  bsend :id * 2
  bsend (:neutral % 64) + 192
end

; to gain resolution, change last argument to
; one that uses the full 0 to 255 range
to turn-servo :id :angle
  bsend $115
  bsend :id * 2 + 1
  bsend :angle * 255 / 90
end

to servopos :id :angle
  bsend $115
  bsend :id * 2 + 1
  bsend :angle
end
```