

Animate Board

Motion / Sound / Digital Output Controller

General Description

The **ANIMATE BOARD** is a 9 Volt dc powered full feature Sound, Motion and Digital switched ON / OFF output control interface board.

The controller has on-board sound recording and playback to a 20 second sound chip with microphone and speaker output and up to 40 seconds of recorded and playback motion saved to a EEPROM for 4 standard +5 Volt dc servos and control of 4 digital switched ON and OFF outputs at +5 Voltdc (10 mA) per channel action.

The Animate board incorporates many features such as looping playback servo motion with variable delay between loops. An auto start-up on power option and on board connector for remote activation switching such as a PIR sensor, contact switch or mat pressure pad to initiate servo playback and on- board sound output.

Recording sessions are built up on a channel by channel process - no complex programming is required. During recording, all previously recorded channels are re-played to aid synchronization the current channel being programmed.

Programming is easily done, with a set of push button keys and control potentiometer built onto the board.

Speaker connection terminal allow the addition of an 8-16 ohm speaker which can be driven directly from the Animate board .

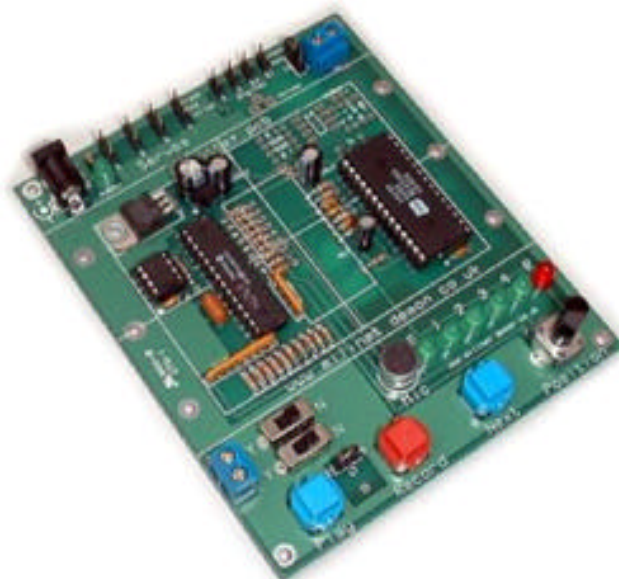
Motion, Sound and Switched ON / OFF outputs are all controlled from a single board.

Connection pins on-board for servos, output hookups.

Animate Board is pre-assembled and tested. Power Supply and Servos not included, but are available for purchase.

Applications

- Animatronics
- Trade Shows
- Puppets
- Haunted Attractions
- Media Arts
- Other



Board Size: 5" L x 4-3/16" W
Power Requirements: 9Volts dc @ 2 Amp.

Features

- 4 Servo output channels, each capable of recording and playback of up to 40 seconds of action.
- 4 Digital switched 5 Volt dc ON / OFF channels outputs.
- 20 Second sound chip for recording messages with built in microphone.
- On-board potentiometer to adjust servo positions during recording or to determine the time delay between play loops during automatic loop play - adjustable between 0 and 65 seconds.
- NEXT, PLAY and RECORD button keys.
- Record enable / disable jumper, erase protection.
- Output terminal drives 8-16 ohm speaker.
- AUTO-PLAY and LOOP-PLAY selection switches.
- Motion, Sound and Switched ON / OFF outputs are all controlled from a single board.
- No host computer or other programming device is needed to operate the Animate board, all controls are built on the Animate board.

Ordering Information

Catalog Number:
ATC-0001

For more information on this product or to place an order

Blue Point Engineering

www.BPEsolutions.com
Phone (303) 651-3794